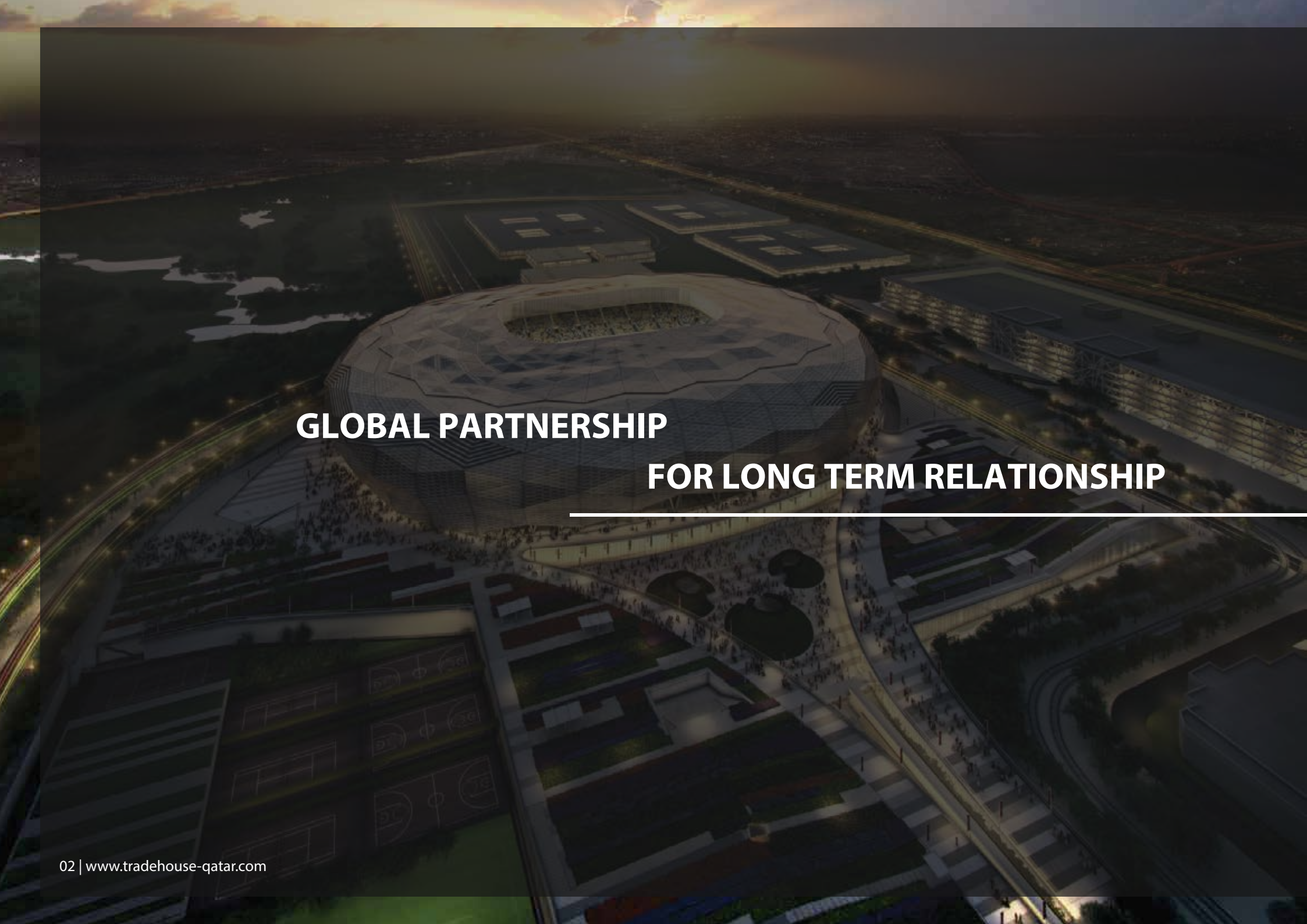




TRADE HOUSE QATAR CO. W.L.L.





**GLOBAL PARTNERSHIP**

**FOR LONG TERM RELATIONSHIP**

---

# ABOUT US

---

Established in 2004, Trade House Qatar Co. W.L.L. has developed over the past years into a leading Major Supplier of Electrical Materials to the Construction Industry in Qatar. By following a market driven policies and thorough research of the projects requirements, we have established over the past few years a partnership/distributorship agreements with some of the leading international electrical manufacturers in the world whose products are needed in the development and growth of the construction industry in the Oil & Gas, Energy, Industrial and Commercial Sectors.

THQ has developed a cordial & mutual trust long term relationship with most of the construction companies involved in this industry here in Qatar by providing the technical supports needed as well as keeping large stocks and maintaining the supply delivery time to the minimum.

THQ employs a number of technically qualified engineers and implement an electronic BTB programs to minimize the transaction & delivery time.

Some of the leading names in the electrical industry of whom THQ is in partnership with are : **nVent-ERICO** Earthing and Lightning Protection System, **CMP-UK** Cable Glands and Cleats for Industrial & Hazardous Applications, **Steel and Liquid Tight Flexible Conduits and Accessories**, **Kompress-UK** Insulated and Non –insulated Cable Lugs, **Palazzoli-Italy** for Industrial Sockets and Switches, **Rexway-Malaysia** for Steel Conduits and Fittings, **Lewden-UK** for Industrial Plugs/Sockets and weather proof electrical accessories, **ICMS-Qatar** manufacturer of total solutions for Cable Management and Support Systems such as Cable Trays, Ladders and Trunkings, **ETA-Italy** enclosure solutions for Industrial and Electronic Applications, **Brady-USA** Cable Labelling System, **Panduit - USA** Cable Ties, **RP-TEKNIK-GERMANY** Emergency Lighting & Central Power Supply Systems.



## LIST OF **PRODUCTS**



**nVENT/ERICO-USA**  
Earthing & Lightning Protection  
System



**CMP - UK**  
Cable Glands & Cleats



**RP-TEKNIK-GERMANY**  
Central battery System Solution



**PALAZZOLI - ITALY**  
Industrial Plugs, Switches, Socket  
Outlets, Enclosures, Tunnel Systems



**LEWDEN - UK**  
Industrial Socket, Plugs and  
Weather Proof Electrical  
Accessories



**REXWAY - MALAYSIA**  
Steel Conduit System



**ICMS - QATAR**

Cable Tray, Trunking, Ladder  
and Support Systems



**ETA - ITALY**

IT Rack Cabinets & Enclosures



**KOMPRESS - UK**

Copper Terminal Lugs



**BRADY - USA**

Cable Labelling System



**PANDUIT- USA**

SS Cable Ties



**AMPER-TURKEY**

Earthing & Lightning Protection  
System





Since 1903, nVent ERICO has been a leading designer and manufacturer of precision-engineered solutions. Beginning with the invention of nVent ERICO Cadweld and pioneering the development and standardization of copper-bonded ground rods in the 1970s, we have built a strong legacy of application expertise and product innovation. As an industry leader, we strive for continual improvements in protection from the ground up.



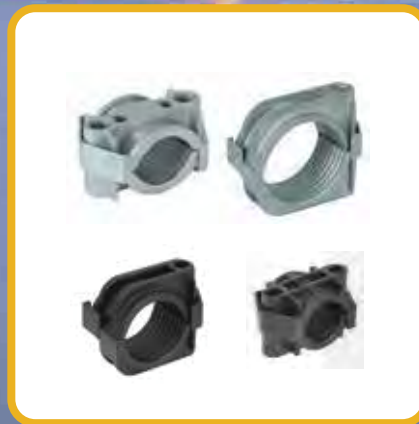
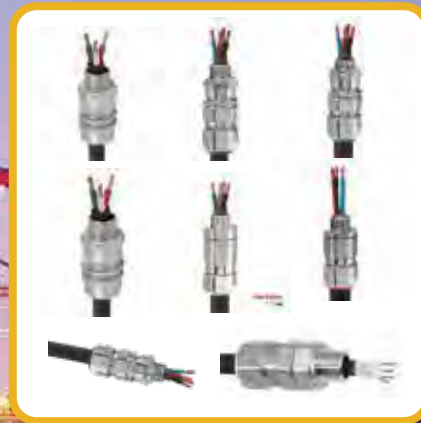




## INDUSTRIAL, MARINE, HAZARDOUS AREA **CABLE GLANDS & CLEATS**

---

CMP Product is a leading specialist manufacturer of Cable Glands, Cable Connectors and associated accessories used extensively for power, control, lighting and instrumentation cable applications in connection with IEC and NEC cables. Having the widest portfolio Cable Gland products meet every kind of situation imaginable CMP offers variety of solutions for use in Marine, Hazardous and Non Hazardous (Industrial) Areas, for a large selection of cable types. CMP designs and produces Cable Glands with Ex d/Ex e Zone 1, Zone 2, Zone 21 & Zone 22 Approvals for use in Gas Group IIC environments under CENELEC & IEC Area Classification rules. Additionally Cable Connectors for NEC Classified Hazardous Locations, are available for Class I, II & III, Divisions 1 & 2, where Gas Groups A, B, C, D and Dust Groups E, F & G are present. International Hazardous Area Approvals are held from SIRA, CEPEL/Inmetro, CSA, UL, GOST, NEPSI, TUV, and CIDET. In addition Marine Classification Society Approvals from Lloyds, DNV & ABS are also held. CMP also manufactures wide range of Cable Cleats for all applications, including single, trefoil, quad and matrix applications that supports cables and conductors. Safety is the CMP Priority – all CMP cable cleat products were designed, constructed, tested and third party certified in accordance with IEC64914:2009. Testing ensures that the cable cleats are capable of providing the necessary resistance to electromechanical forces, can retain the mechanical load that the cables and conductors are subjected to when and under fault conditions, and will safely maintain the integrity of the cable.







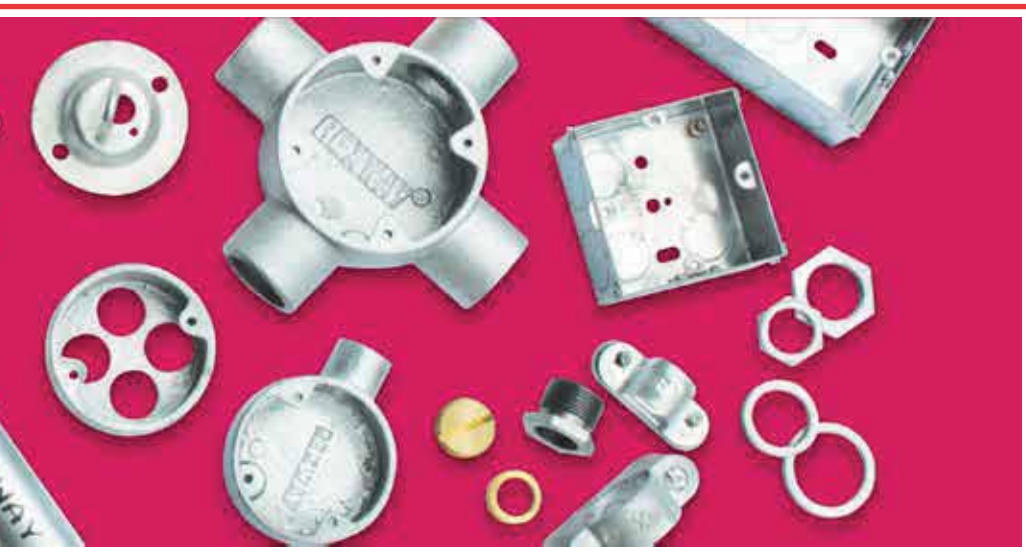
# REXWAY

## STEEL CONDUIT SYSTEMS

---

Rexway Electrical Steel Conduit systems are designed specifically with global specifications in mind ensuring absolute functionality in a variety of demanding environments. A well-designed electrical conduit systems provides mechanical protection and electrical safety to persons and property with capacity for future expansion and changing conditions.





## PRODUCTION RANGE OF CONDUITS

BS EN Conduit and Fittings Comply with

- BS 4568 Part 1, Part 2
- BS EN 50086-2-1
- BS 31
- BS EN 50086-1
- BS EN 61386-21

American Standard Conduits

- EMT Comply to ANSI C80.3, UL797
- IMC Comply to ANSI C80.6, UL1242
- RSC Comply to ANSI C80.1, UL6 (RSC Full Range are available in PVC Coated Conduit)

Flexible Conduit Comply with

- BS 731
- BS EN 61386-23
- BS EN 50086-2-03



Design and functionality, ease of use and energy efficiency, reliability and durability – products from RP-Technik must meet a wide range of requirements. We develop and manufacture our emergency and safety luminaires and our power supply systems exclusively in Germany. The performance and quality of our products have top priority – for the safety of people and plants. In our ultra-modern light laboratory with photogoniometer, audited by TÜV Rheinland according to DIN EN 60598-2-22, the light output of individual LED lights is measured and documented. We provide photometric data of our safety luminaires for the planning of projects. Each product complies with the current standards and regulations and passes a strict quality control before delivery.





## **INDUSTRIAL SOCKETS, PLUGS AND WEATHER PROOF ELECTRICAL ACCESSORIES**

**(KAHRAMAA APPROVED)**

---

Lewden Electrical Industries has been supplying Electrical Equipment to Industry for over 60 years, established in 1964, it had developed an expertise in the Metal Die Casting and Machining of products for the Electrical and Components Industry.

The 1970's saw the advent of the Industry European Standard IEC 309 for Plugs and Connectors superseding the BS4343 British Standard, this stimulated Lewden into the design and manufacture of a Plastic molded range of Plugs, Connectors and Switches to enhance the already well-established Die-cast range, the new "Titan" range of products soon became the preferred choice of the Electrical Contractor, establishing Lewden as the market leader in their chosen Sector.

Lewden's Custom Build Division has developed a skill and expertise in building Electrical Distribution equipment to meet our customers bespoke requirements, turning our customers sometimes "sketchy" brief into a fully Designed and Engineered solutions.

Lewden has been supplying Industrial Sockets and Switches to Kahramaa Projects for many years.





## PRODUCTS

- ◇ Industrial Plugs and Sockets
- ◇ Switched Interlocked Sockets
- ◇ Weathertight Metal Clad Range
- ◇ Topter Series
- ◇ Enclosures
- ◇ Isolator and Switches



## INDUSTRIAL PLUGS, SWITCHES, SOCKET OUTLETS, ENCLOSURES, TUNNEL SYSTEMS

---

Quality, Product Innovation and Service

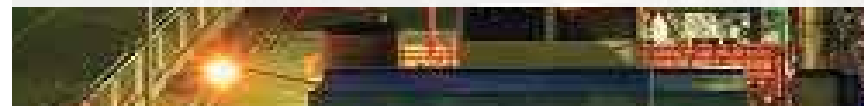
In 1904 Palazzoli began its activity in Brescia when electrical energy was first used in the industry. The company is specialized in manufacturing electrical appliances with safety features that are protected and watertight, for industrial, marine, civil, agricultural and OEM applications.

The offer of PALAZZOLI extends into a wide range of finished products, to which special customized solutions are specifically developed in accordance to the needs of end-users. The product conforms to technical and safety standards and is manufactured with very high quality materials, in metal and self-extinguishing isolated thermosetting (GRP) and thermoplastic.

Palazzoli undertakes the commitment towards all end-users to offer reliable, safe and lasting quality products at the best service.

This task, as in the last century of activity, continues to honour the trust and respect that customers have posted in its trademark.

- /// Interlocked Socket-Outlets
- /// Water Tight Wall-Mounted Enclosures
- /// Plugs and Socket Outlets
- /// LED Lighting Fixtures
- /// Explosion Proof Devices
- /// Isolators and Switches
- /// Fire Rated Solution for Tunnel and Metro Application
- /// Customized Solutions





## PLUGS & SOCKETS



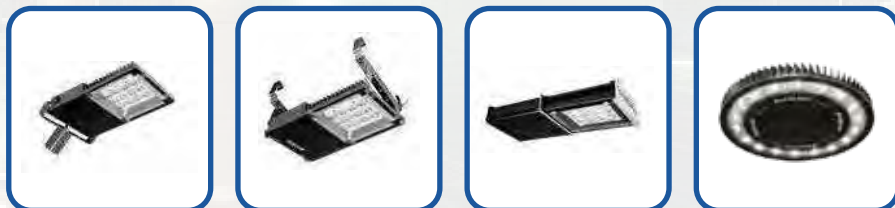
## INTERLOCKED SOCKET - OUTLETS



## BOARDS & BOXES



## INDUSTRIAL LIGHTING



100%  
ECO  
SAFE

All products of PALAZZOLI are developed using the latest manufacturing and material technologies for sustainable processes, products and recycling.

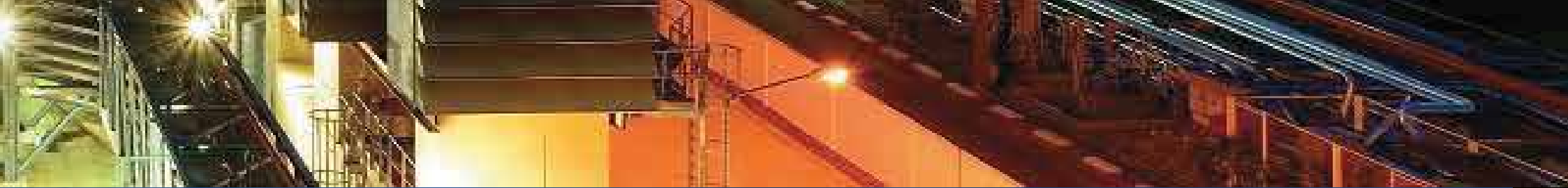


## BRADY HISTORY

Brady was founded in 1914 in Eau Claire, Wisconsin, as W.H. Brady Co., and renamed Brady Corporation in 1998. The company began selling products internationally in 1947. In 1984, Brady went public, with stock trading on the NASDAQ Stock Market, and in 1999, moved trading of its stock to the New York Stock Exchange, where it trades under the symbol BRC.

Brady's core capabilities in manufacturing, precision engineering and materials expertise make it a leading supplier to the Maintenance, Repair and Operations (MRO) market and to the Original Equipment Manufacturing (OEM) market.

- ◇ **Pipe Markers**
- ◇ **Wire Identification**
- ◇ **Electrical Identification**
- ◇ **Underground/Buried Cable Identification**





## COPPER TERMINAL LUGS & SPLICES

---

### COPPER TERMINALS / SPLICES (NON – INSULATED)

Kompress Copper Tube Terminals and Copper Tube Splices are manufactured from precision drawn tubes to BS2871, they are designed and manufactured to meet requirements of BS4579 Part 1 and are supplied in accordance with ISO 9002 Accredited Certification. Most copper terminals and splices are supplied bright electro tin plated to BS1872 Part 2 for corrosion resistance and attractive appearance. Copper Tube Terminal and Splices range covering cables from 1.5mm<sup>2</sup> to 1000mm<sup>2</sup> Bell Mouth Cable Entry from 6mm<sup>2</sup> to 240mm<sup>2</sup> to ensure easy entry.

### INSULATED TERMINALS

Kompress Terminals are produced to comply generally with the requirements of BS6516 Part 2: 1990 and are supplied in accordance with ISO 9002 accredited certification. They are manufactured from high conductivity copper or brass, electro tinned for corrosion resistance. All Kompress Terminals feature a bell mouthed barrel for faster and easier conductor entry. Insulated Terminals range covering cables from 0.5mm<sup>2</sup> to 6mm<sup>2</sup>





Established in 1978, in Italy, with over 35 years of experience in steel sheet, stainless steel and extruded aluminium production, ETA represents a safe and recognized benchmark for the global enclosures market as a manufacturer of high quality innovative solutions for the Industrial automation, LV energy distribution and IT business.

The group presents itself with an HQ, two production sites (one situated in Canzo, Italy, for the early stages of production and a second one in Albavilla, Italy, for the final stages), a logistic centre in Italy, two commercial subsidiaries Overseas (England and France), a branch office in Cyprus (for the Middle East market) and an extensive sales network throughout Italy and around the world in more than 40 countries.

As of today, you can count on a professional and reliable team, on a flexible company, on high-quality products meeting your needs and main international standards.

## MONOBLOC CABINETS

E MOX, the ideal solution combining strength and inner modularity.



## PRODUCTS

### SUITE CABINETS FOR CONTROL & AUTOMATION

New manufacturing concepts and materials for E NUX, our strong and performing cabinet range. Available flat-pack.



### WALL MOUNTING BOXES

More than 40 dimensions, 3 versions (blank or plexi door, single or double door, with standard locking system or rod system ) and a wide range of accessories to complete your solution : MDST modular chassis, STPO1 inner door, TT roof, WE inserts, SDWC-010 wall - mounting brackets.



## COMPACT ENCLOSURES

E COMP, the compact solution for free-standing or wall-mounting applications.



## ENCLOSURES

Thanks to the flexibility of E NUX system and to the compatibility with ETA accessories, the structure allows the creation of different modular solutions.



## RACK 19" SOLUTIONS ( INDOOR & OUT DOOR )

The wide range of 19" components, totally compatible with E NUX, represents the necessary completion of the cabinets. A specific line of cabinets, enclosures & accessories dedicated to the fields of computing, information & technology, extended networks, sharing & security







Panduit produces an ever-growing variety of network and electrical solutions that are used throughout the world. Major products include network cabling systems, cable ties, wiring accessories, surface raceway and wiring duct, terminals, power connectors, installation tooling, identification products, heatshrink products, communication connectors and cable management systems.

Panduit products are used by customers in telecommunications, original equipment manufacturers, construction, utilities, maintenance and repair operations, office/factory automation, transportation, education, healthcare, finance and government markets.

At Panduit, product service quality and reliability are given the highest priority. All personnel within our organization are dedicated to providing our customers with products and services that will meet their needs—every time because we know that is the best way to run a business. Each Panduit employee receives training in quality methods and Panduit quality principles. Management and individuals at every level are engaged in designing, producing and improving quality products and processes, helping to earn our customers' preference for doing business with Panduit.



Amper is one of the leading companies in the lightning protection and grounding sector, with more than 50 years of experience, well known by its customers for its high quality services and professionalism. Founded in 1962 by H.N. Sirmabiyıkoğlu and starting to operate as a joint venture in 1972, Amper has undertaken the supply works of many Turkish and foreign projects as one of Turkey's modern, established and innovative companies with years of success behind it both at home and abroad.

Amper is committed to meeting the needs of all domestic and foreign institutions and organizations in the lightning protection and grounding industry in accordance with national and international standards. True to our values, we have always shown our industry the path forward, never compromising on the dynamism and enthusiasm that has shaped the company from day one. We continue to offer optimum solutions to customer needs with our range of products for the industry and distributorship of leading global brands.

We do our best to be a company that always follows the developments in its industry and technology closely, keeps the bar high without compromising team spirit, develops its quality understanding at all times, and makes a commitment to its customers regarding the continuity of its quality. Aiming to hand down the pool of knowledge we have built on strong foundations to future generations, we will take firm steps forward in the 21st century towards our vision to become the leading company in the industry, just as we did in the 20th century with the experience and strength we have gained over the years.





## **CABLE CONTAINMENT SYSTEM**

ICMS was established in 2006 and has experienced exponential growth , with the company earning a reputation with expressive track record of projects. ICMS is an ISO certified company, and procedures are UL certified with products suitable for passenger rail systems as ICMS cable trays support are certified to the "NFPA 130 2007", and able to withstand 500 Degree for 1 hour.

Having the expertise with more than fifteen years in the field of manufacturing and sales of the cable management system in gulf region , funded us the strength of producing competitive products with out compromising quality.



**CABLE TRAY**



**WIRE MESH**



**CABLE LADDER**



**TRUNKING**



**CABLE LUGS**



**BACK BOX**



**CHANNEL & BRACKETS**



**SUPPORT SYSTEMS**





Industrial Cable Management System Co.

## CONDUIT SYSTEMS AND ACCESSORIES

---

ICMS conduit systems are used to protect critical power and data cabling. ICMS has developed into a leading player within the conduit market.

ICMS is one of the market leading brands that can be found all over the world. Combining innovative design with dedicated manufacture, it offers customers one of the world's broadest ranges of cable protection products and solutions. With a choice of wide products range covers G.I. Conduits, RGS, & EMT conduits, metallic flexible conduit system, G.I. Boxes for the protection of critical power and data cable.

The system solutions from ICMS need to perform in a wide variety of environments from high temperature to freezing subzero conditions. The products are designed and tested to withstand constant vibrations, water ingress, offer corrosion resistance and are available in halogen free, low smoke and low toxicity materials. An extensive range of engineered solutions are designed to withstand the rigours of some of the most technically demanding markets. So whatever your project involves our experience will provide the answer helping you to specify the correct conduit system.







Industrial Cable Management System Co.

## CABLE LUGS

---

ICMS cable lugs are designed to cater for a wide range of applications and cable management. We supply a comprehensive range of cable lugs designed for terminating and connecting our low voltage cables to equipment. Our cable lugs work in conjunction with standard cable crimping tools.

ICMS cable lugs are connecting devices used primarily for terminating and joining cable and wire conductors in electrical installations and equipment. The standard electro tinned lugs are suitable up to 150oC.

Cable Lugs are designed to be crimped on to a conductor to facilitate the termination of the cable through the lug hole and form a secure mechanical and electrical joint.

Copper cable lugs are manufactured from high conductivity copper which is tin plated to prevent corrosion. It incorporates the key benefit of joining the cables and wires in electrical reticulation systems and equipment.







Industrial Cable Management System Co.

## **CABLE TAGS, VALVE TAGS & EQUIPMENT TAGS (TRAFOLYTE & SS)**

### CAT(Cable Tags)



Stainless Steel #316 **Cable Tags**.  
ICMS uses Laser etching for permanent marking.  
Suitable for all environments  
Tags are strapped to cable using plastic or stainless steel cable ties.

Sizes: 19mmX90mm  
8mmX90mm  
8mmX130mm

### VAT(Valve Tags)



Brass and Stainless Steel  
#316 **Valve Tags**  
Laser etched for permanent marking.  
Sizes: 1.5" and 2"

### EQT(Equipment Tags)



Stainless steel #316  
**Equipment Tags**.  
Laser etched for permanent marking, suitable for all environments.  
Sizes can be customized with the required number of fixing holes.

## CONTACT US



P.O. Box 22108 Doha, Qatar



+974 40075757



+974 40075758



info@tradehouse-qatar.com

tradehouse@qatar.net.qa



www.tradehouse-qatar.com